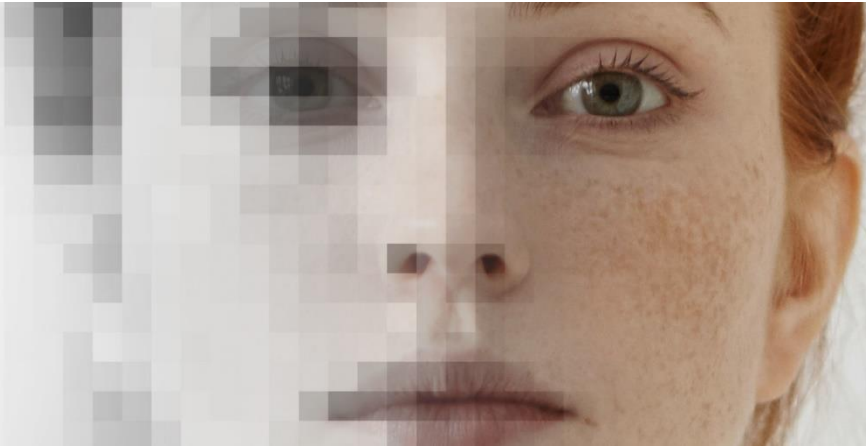


# FinnGenin tarjoamat mahdollisuudet lääkeyhtiön näkökulmasta Suomessa

**Anssi Linnankivi**, Lääketieteellinen johtaja, Medical Director, Roche Oy



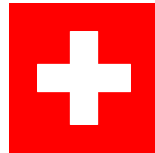
# Roche in brief

**#1** in biotechnology  
and in oncology

**94 000**  
Employees worldwide, **150 in Finland**



Founded  
**1896**  
In Switzerland



**137 Million**



Patients treated in 2018

**9,7 Billion**

Euros invested in R&D in 2018



Present over

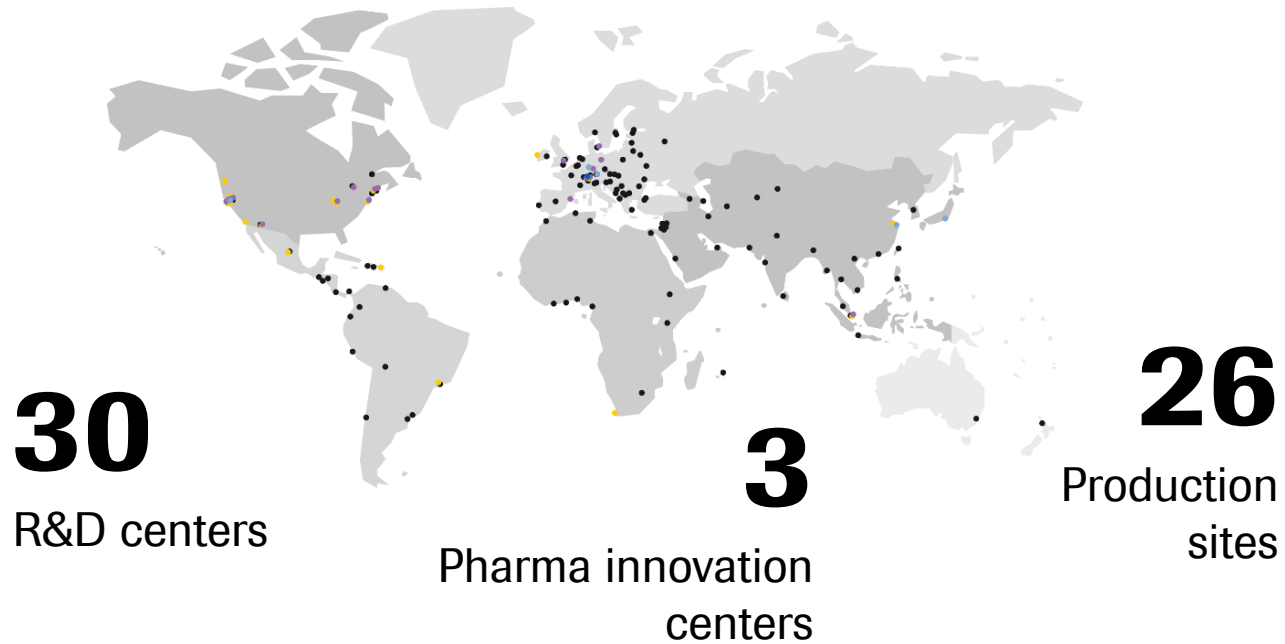
**100**  
countries



# FinnGen partners

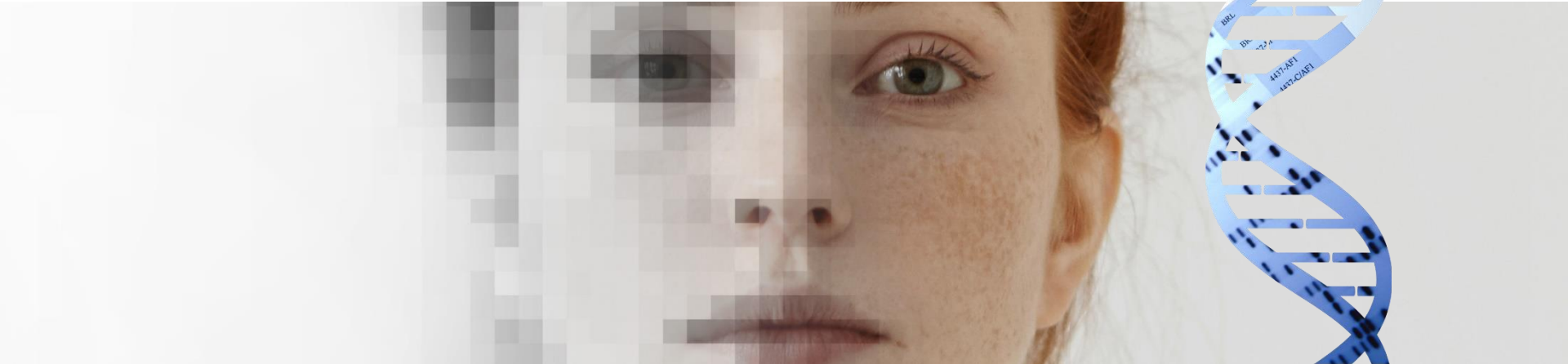


# Global R&D network

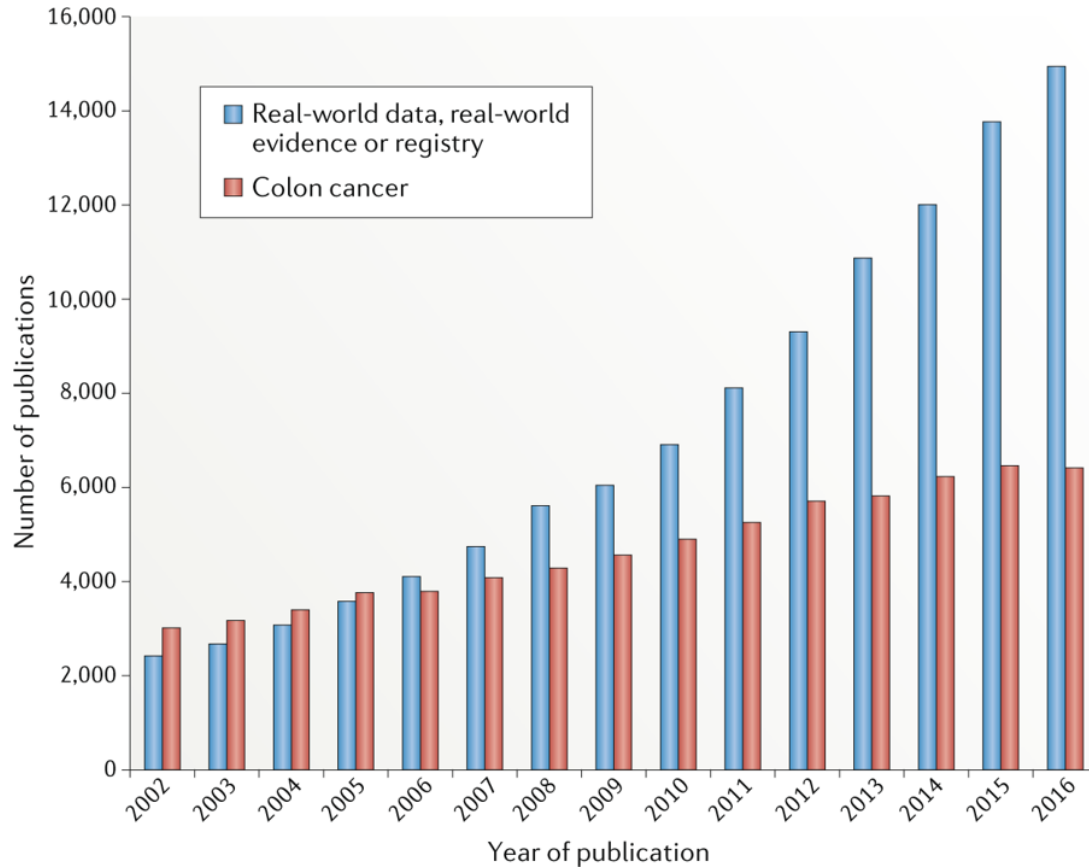


---

# What is Pharma up to at the moment?



# Rapidly increasing use of RWD in research



Booth et al. 2019 Nat Rev Clin Oncol



## Meaningful data

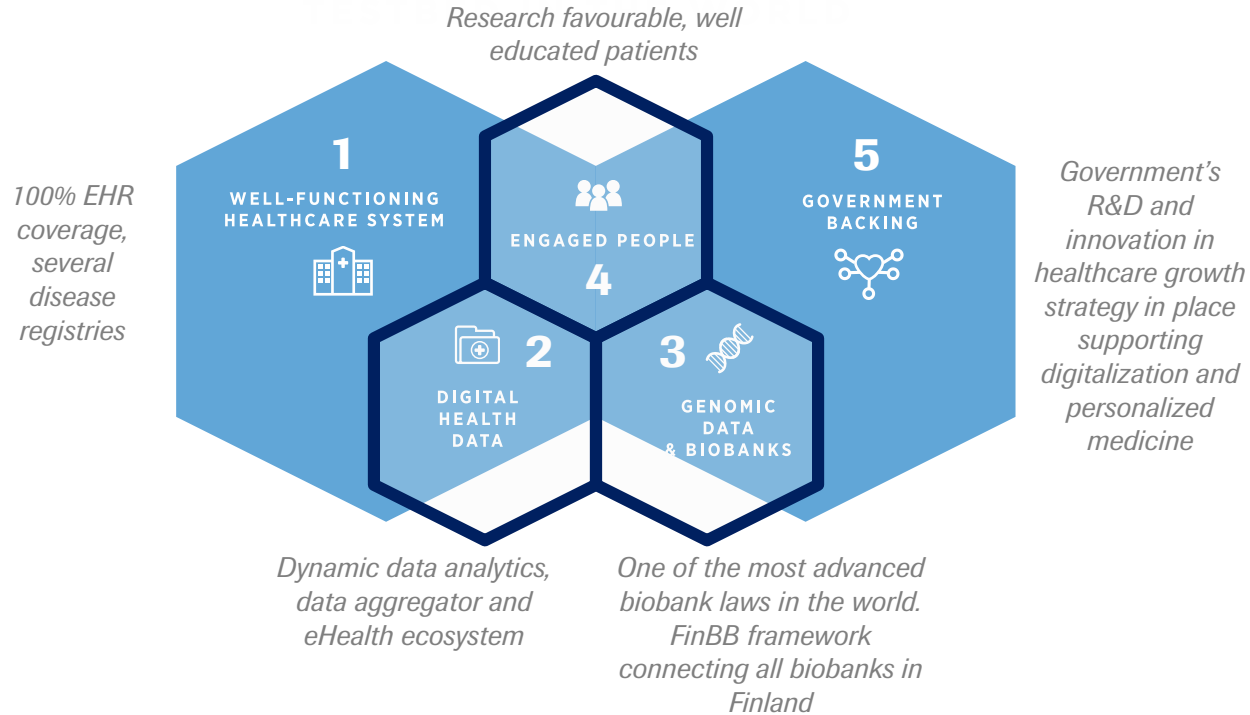
High quality data with a purpose:  
to answer key scientific questions

## AT SCALE

Covering enough patients  
to be generalizable



# Finland from the perspective of global pharma







## **FinnGen collaboration has....**

- developed the understanding of strengths and capabilities in Finland
- contributed to the likelihood of getting investments in Finland
- increased the footprint of Finnish affiliate in global initiatives
- increased the number of own research projects of the Finnish affiliate

*Doing now what patients need next*